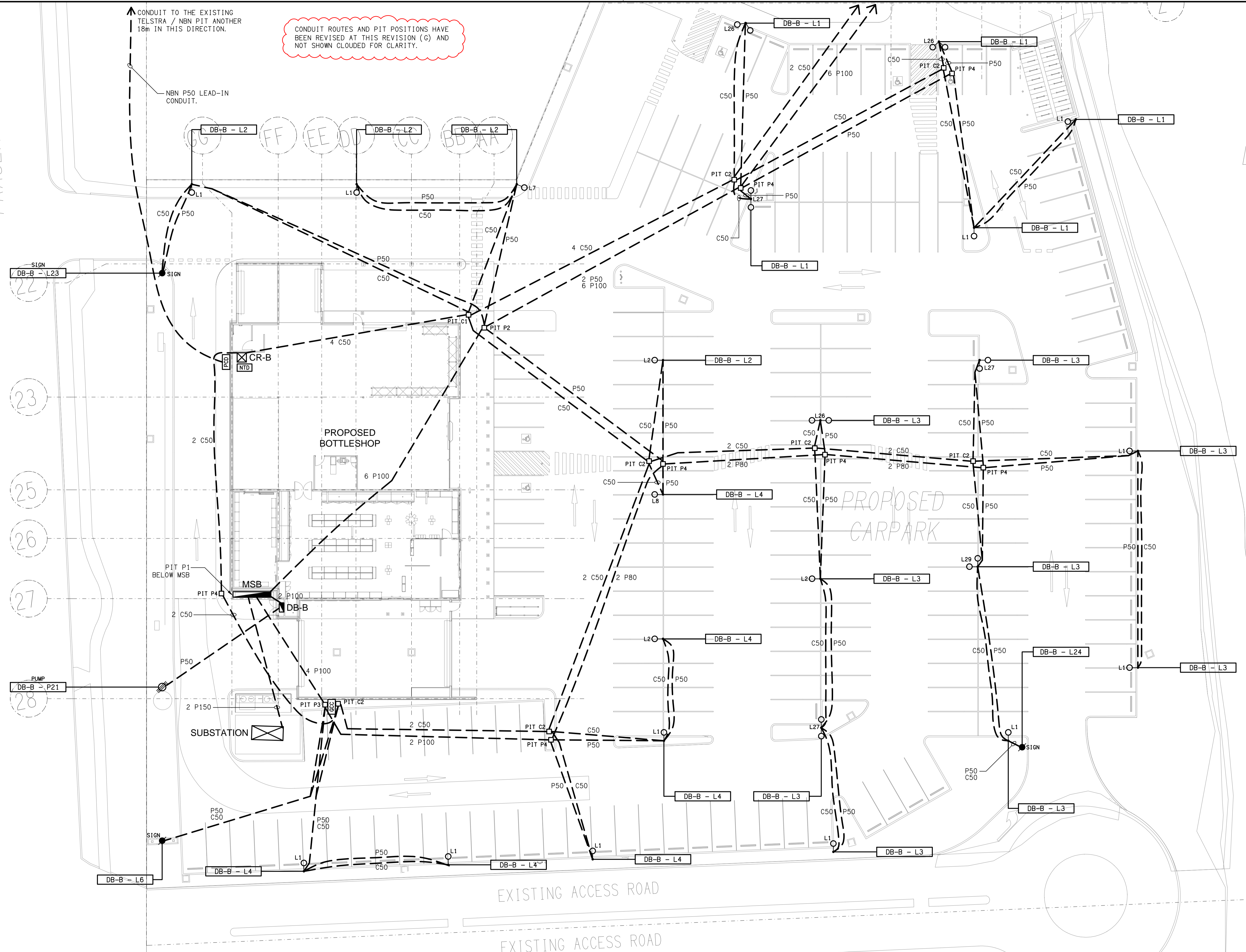


FRASER DRIVE

LAKE



CONDUIT ROUTES AND PIT POSITIONS HAVE BEEN REVISED AT THIS REVISION (G) AND NOT SHOWN CLOUDED FOR CLARITY.

SIGN DB-B - L23

22

23

25

26

27

PUMP DB-B - P21

28

ELECTRICAL DESIGN GROUP BRISBANE  
PTY LTD  
ACN 092 710 793  
TRADING AS:  
ELECTRICAL DESIGN GROUP

THE COPYRIGHT OF THIS DRAWING  
REMAINS THE PROPERTY OF THE  
ELECTRICAL DESIGN GROUP.  
USE FIGURED DIMENSIONS  
IN PREFERENCE TO SCALE.  
ALL DIMENSIONS TO BE  
VERIFIED ONSITE.

**ELECTRICAL DESIGN GROUP**  
ELECTRICAL BUILDING SERVICES CONSULTANTS  
BRISBANE GOLD COAST  
P.O. Box 15, Sherwood Q.4075  
Phone: (07) 3278 4375  
Email: brisbane@edg.net.au  
Web: www.edg.net.au

PROJECT:  
**DRY DOCK ROAD HOTEL,  
TWEED HEADS SOUTH**  
CORNER DOCK ROAD & FRASER DRIVE, NEW SOUTH WALES

G	CONSTRUCTION	18/06/2026
REV:	DESCRIPTION:	DATE:
DRAWING: <b>ELECTRICAL SERVICES CARPARK PLAN</b>		
SCALE: 1:200	AT A1	PROJECT NO: <b>C2864a</b>
		DRAWING NO: <b>E03</b>
		REVISION: <b>G</b>